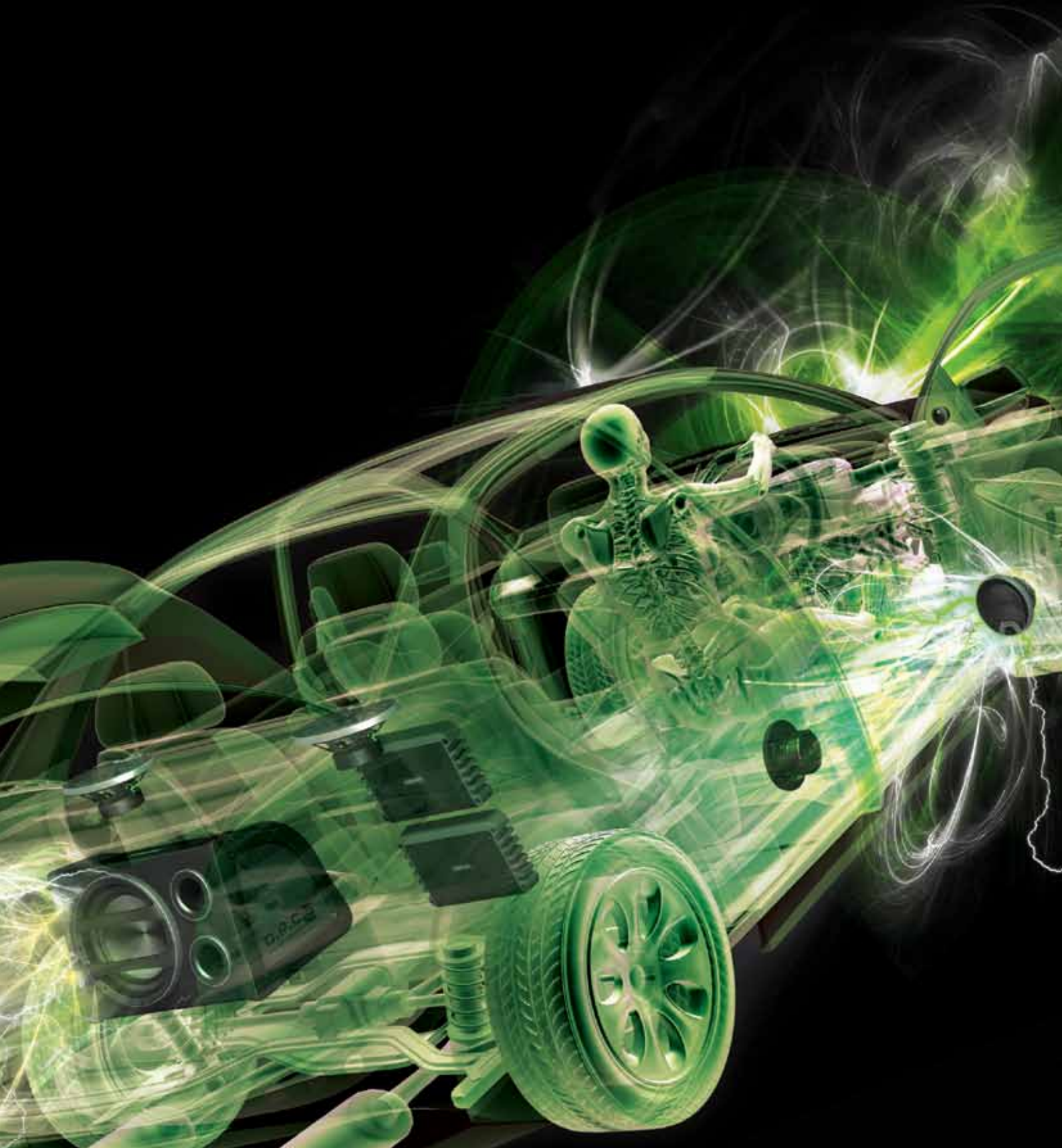


FUSION[®]

CAR AUDIO PRODUCT RANGE



TRANSPORT YOURSELF
TO A WORLD WHERE ALL THAT MATTERS...



...IS PURE, UNADULTERATED

SOUND

IMMERSE YOURSELF IN A FUSION SOUNDSCAPE.

AUDIO SO CLEAR, BASS SO DEEP,
YOU CAN FEEL IT IN YOUR BONES.

The new FUSION car audio range is engineered from premium materials and boasts state-of-the-art technology with the sole purpose of enhancing your audio experience.

FUSION[®]



For the latest FUSION news, products, specifications and technical support,
visit www.fusionelectronics.com

ACTIVE ENCLOSURES

OVER ENGINEERED HEAVY CONSTRUCTION

CP SERIES ACTIVE ENCLOSURES

... COMBINED WITH THE LATEST "D-CLASS" AMPLIFIER TECHNOLOGY AND ENCLOSURE DESIGN PROVIDE THE PLATFORM TO DRIVE THE MOST ADVANCED REFERENCE STANDARD SUBS TO EARTH SHATTERING LEVELS. THE LATEST IN DESIGN TREATMENTS ENSURE UNPARALLELED BASS PERFORMANCE AND STYLE. EVERYTHING IS PROVIDED TO ENSURE SIMPLE "PLUG AND PLAY" INSTALLATION.



// **DPCS DUAL PORT CONCUSSION SYSTEM**
Massive SPL output. Fine tuned enclosure.

// **FFBD FUSION FOCUSED BASS DEFLECTOR**
Reduced standing waves for more accurate bass.

// **COMPOSITE RUBBER END CAPS**
Reduced cabinet slide. Isolation from vehicle body.
Produces more accurate bass.

// **EFFICIENT HEAT SINK DESIGN**
Improved thermal transfer - greater reliability.
Longer sustained power output.

// **D-CLASS AMPLIFIER TECHNOLOGY**
High output, highest thermal efficiency.

900
WATTS



CP-AW2120
DUAL 12" ACTIVE WEDGE ENCLOSURE

D-CLASS
TECHNOLOGY

750
WATTS



CP-AW1120
12" ACTIVE WEDGE ENCLOSURE

300
WATTS



D-CLASS
TECHNOLOGY

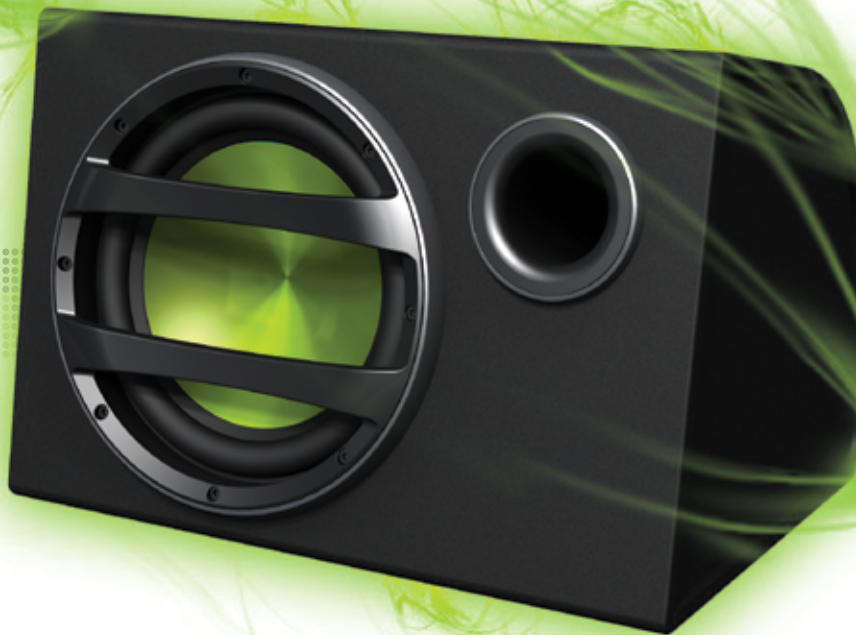
CP-AS1080
8" SUPER SLIM ACTIVE SUBWOOFER

HIGH EFFICIENCY POWER AMPLIFIERS

... BUILT INTO ENCLOSURES WHICH ARE EXHAUSTIVELY TUNED AND TESTED TO ENSURE THE BEST POSSIBLE BASS PERFORMANCE FROM DRIVERS THAT INCORPORATE THE VERY LATEST IN DESIGN AND CONSTRUCTION.

EVERYTHING IS PROVIDED TO ENSURE SIMPLE "PLUG AND PLAY" INSTALLATION.

CS SERIES ACTIVE ENCLOSURES



- // **FFBD FUSION FOCUSED BASS DEFLECTOR**
Reduced standing waves for more accurate bass.
- // **EFFICIENT HEAT SINK DESIGN**
Improved thermal transfer - greater reliability.
Longer sustained power output.

**(750
WATTS)**
PER CHANNEL



CS- AW2120
DUAL 12" ACTIVE WEDGE ENCLOSURE

D-CLASS
TECHNOLOGY

**(450
WATTS)**
PER CHANNEL



CS- AW1120
12" ACTIVE WEDGE ENCLOSURE

**(360
WATTS)**
PER CHANNEL



CS- AT1100
10" ACTIVE TUBE ENCLOSURE

AMPLIFIERS

CRYSTAL CLEAR HIGHS

... AND MIDS PLUS EARTH SHATTERING BASS IS ACHIEVED BY INCORPORATING STATE OF THE ART "D-CLASS" CIRCUIT DESIGN AND PCB TOPOGRAPHY. THE FUSION DA SERIES OF AMPLIFIERS DELIVER MASSIVE POWER TO SATISFY ALL REQUIREMENTS FOR THE SERIOUS CAR AUDIO ENTHUSIAST.

DA SERIES AMPLIFIERS



// D-CLASS AMPLIFIER TECHNOLOGY

High output, greater efficiency.

// 1 PIECE DIE CAST HEAT SINK

Improved thermal transfer - greatest reliability. Longer sustained power output and durability.

// 1 OHM STABLE MONOBLOCK

Multiple Subwoofer installation for higher SPL.

// 5 WAY CIRCUITRY PROTECTION

Thermal / Reversed Power Polarity / DC Offset protection / High + Low Voltage.

// DISCRETE INSTALL PANEL

Covers amp set-up controls & hides all cabling.

// FLFC FUSION LOW FREQUENCY CONTROL

Accurate fine tuning of frequency response.

(2250^W) D-CLASS
WATTS₂ TECHNOLOGY



CA-DA12250
2250 WATT MONOBLOCK AMPLIFIER

(1600^W) D-CLASS
WATTS₂ TECHNOLOGY



CA-D451600
1600 WATT 5 CHANNEL AMPLIFIER

(1400^W) D-CLASS
WATTS₂ TECHNOLOGY



CA-D441400
1400 WATT 4 CHANNEL AMPLIFIER

UNPARALLELED POWER DELIVERY

AM SERIES AMPLIFIERS

... AND SUPERIOR FINISH IS ACHIEVED THROUGH TOTAL ATTENTION TO DETAIL IN ALL DESIGN AREAS. STATE OF THE ART CIRCUIT DESIGN, COUPLED WITH ULTRA EFFICIENT THERMAL TRANSFER ENSURE THE BEST CURRENT DELIVERY POSSIBLE FROM AN AMPLIFIER SERIES THAT DELIVERS IN POWER AND STYLE.



- // **5 WAY CIRCUITRY PROTECTION**
Thermal / Reversed Power Polarity / DC Offset protection / High + Low Voltage.
- // **FLFC FUSION LOW FREQUENCY CONTROL**
Accurate fine tuning of frequency response.

(900 WATTS RMS) **D-CLASS** TECHNOLOGY

CA- AM10900
900 WATT MONOBLOCK AMPLIFIER



(1200 WATTS RMS)

CA- AM41200
1200 WATT 4 CHANNEL AMPLIFIER



(700 WATTS RMS)

CA- AM40700
700 WATT 4 CHANNEL AMPLIFIER



(650 WATTS RMS)

CA- AM20650
650 WATT 2 CHANNEL AMPLIFIER



(350 WATTS RMS)

CA- AM20350
350 WATT 2 CHANNEL AMPLIFIER



SPEAKERS & SUBS

INDUSTRY LEADING SOUND

POWERPLANT SERIES SPEAKERS

...PRODUCED FROM A SPEAKER RANGE WITH HIGH EFFICIENCY AND ACCURACY IN SOUND REPRODUCTION. WITH SPEAKER CONES FORGED FROM CURV AND MAGNETS FORMED FROM HIGH-GRADE STRONTIUM FERRITE MAGNETIC MATERIAL, AMAZING SOUND IS ALWAYS GUARANTEED. ADDITIONALLY, THE ENGINE ROOM OF POWERPLANT COMPONENT SPEAKERS IS POWERED BY EDGE WOUND, COPPER COATED ALUMINIUM VOICE COILS, A HALLMARK OF AUDIOPHILE HIFI COMPONENTS.



// TITANIUM TWEETERS

Very accurate high frequency response. Critical detail and extra crisp highs.

// FFFT FERRO FLUID FILLED TWEETERS

High heat dissipation - greater reliability.

// CURV CONE MATERIAL

Light-weight yet high tensile strength and stiffness for bullet-proof sound.

// LARGE MAGNET ASSEMBLY

High efficiency output, high power handling.

(280 WATTS) MD: 65mm (2-9/16")
MDi: 140mm (5-8/16")

PP-CM650
6.5" COMPONENT SPEAKERS



(240 WATTS) MD: 65mm (2-9/16")
MDi: 140mm (5-8/16")

PP-FR6520
6.5" 2-WAY FULL RANGE SPEAKERS



(280 WATTS) MD: 84mm (3-5/16")
MDi: 158mm (6-7/32")
x 227mm (8-15/16")

PP-FR6920
6 X 9" 2-WAY FULL RANGE SPEAKERS



(1200 WATTS) MD: 167mm (6-9/16")
MDi: 295mm (11-10/16")

PP-SW120
12" DUAL VOICE COIL SUBWOOFER



MD = mounting depth
MDi = mounting diameter (cut-out diameter)

AUDIOPHILE PERFORMANCE

CP SERIES SPEAKERS

... FROM SPEAKER FEATURES NORMALLY ONLY FOUND IN HIGH END HOME AUDIO. TECHNOLOGICAL DESIGN AND THE LATEST COSMETIC TREATMENTS HAVE RESULTED IN A SERIES THAT WILL MEET THE NEEDS OF THE MOST DISCERNING CAR AUDIO ENTHUSIAST.

- // **INJECTION MOLDED POLYPROPYLENE CONE**
A lighter, thinner yet more rigid cone material.
- // **LARGE MAGNET ASSEMBLY**
High efficiency output, high power handling.

- // **SILK DOME TWEETERS**
Very accurate, high frequency response tweeters.
- // **FFFT FERRO FLUID FILLED TWEETERS**
High heat dissipation - greater reliability.

(280 WATTS) MD: 67mm (2-5/8")
MDi: 131mm (5-5/32") **MULTI-FIT BASKET**



CP- CM60
6" COMPONENT SPEAKERS

(250 WATTS) MD: 65mm (2-9/16")
MDi: 131mm (5-5/32") **MULTI-FIT BASKET**



CP- FR6030
6" 3 WAY FULL RANGE SPEAKERS

(250 WATTS) MD: 57mm (2-1/4")
MDi: 121mm (4-13/16")



CP- CM50
5.25" COMPONENT SPEAKERS

(220 WATTS) MD: 57mm (2-1/4")
MDi: 121mm (4-13/16") **5" x 7" ADAPTER PLATE**



CP- FR5020
5.25" 2 WAY FULL RANGE SPEAKERS

(450 WATTS) MD: 84mm (3-5/16")
MDi: 156mm (6-3/16")
x 222mm (8-24/32")



CP- FR6930
6 X 9" 3 WAY FULL RANGE SPEAKERS

(180 WATTS) MD: 52mm (2-1/32")
MDi: 103mm (4-1/16") **4" x 6" ADAPTER PLATE**



CP- FR4020
4" 2 WAY FULL RANGE SPEAKERS

MD = mounting depth
MDi = mounting diameter (cut-out diameter)

SPEAKERS

MASSIVE PERFORMANCE IN A SMALL PACKAGE

CS SERIES SPEAKERS

...IS THE HALLMARK OF THE FUSION CS SPEAKER RANGE. INDUSTRY LEADING TECHNOLOGY, COMBINED WITH STATE OF THE ART DESIGN ENSURES A "NO COMPROMISE" SPEAKER RANGE THAT CAN BE INSTALLED IN MOST VEHICLE SITUATIONS.



// SHALLOW MOUNT DESIGN

Shallow design with flush-profile tweeter for simple "behind panel" installation. Slim-line front grille cover.

// FFFT FERRO FLUID FILLED TWEETERS

High heat dissipation - better reliability.

(240 WATTS) MD: 45.5mm (1-13/16") **MULTI-FIT BASKET**
MDi: 126mm (5")



CS- CM60
6" COMPONENT SPEAKERS

(210 WATTS) MD: 41.5mm (1-11/16") **MULTI-FIT BASKET**
MDi: 126mm (5")



CS- FR6020
6" 2 WAY FULL RANGE SPEAKERS

(220 WATTS) MD: 43mm (1-11/16")
MDi: 118mm (4-21/32")



CS- CM50
5.25" COMPONENT SPEAKERS

(190 WATTS) MD: 43mm (1-11/16") 5"x 7"
MDi: 118mm (4-21/32") **ADAPTER PLATE**



CS- FR5020
5.25" 2 WAY FULL RANGE SPEAKERS

(310 WATTS) MD: 71.5mm (2-14/16")
MDi: 156mm (6-3/16") x 222mm (8-24/32")



CS- FR6930
6 X 9" 3 WAY FULL RANGE SPEAKERS

(160 WATTS) MD: 45mm (1-3/4") 4" x 6"
MDi: 103mm (4-1/16") **ADAPTER PLATE**



CS- FR4020
4" 2 WAY FULL RANGE SPEAKERS

MD = mounting depth
MDi = mounting diameter (cut-out diameter)

SUBWOOFERS & ACCESSORIES

GROUND SHAKING AUDIO PERFORMANCE

THE CP SUBWOOFER RANGE DELIVERS MASSIVE BASS PERFORMANCE. A CAREFUL BALANCE OF REFERENCE STANDARD CONE AND SUSPENSION DESIGN COMBINED WITH THE ULTIMATE IN MOTOR ASSEMBLY CONSTRUCTION, RESULTS IN A SUBWOOFER PACKAGE THAT DELIVERS GROUND SHAKING PERFORMANCE ON ALL FRONTS.

// DISH CONE TECHNOLOGY

Accurate sound dispersion.
Reduced break up distortion.

// WOVEN HEAVY DUTY FABIEN LEADS

Vastly improved reliability.
Maximum current delivery.

// HEAVY DUTY PUSH TERMINALS

For simple, easy installation.
Maximum current delivery.

// MAX VOICE COIL VENTING

Improved thermal transfer - greater reliability.
High Power handling.

SUBWOOFERS



[1300 WATTS RMS] MD: 154mm (6-1/16")
MDi: 277mm (10-15/16")

CP- SW120
12" SUBWOOFER



[1000 WATTS RMS] MD: 136mm (5-11/32")
MDi: 277mm (10-15/16")

CS- SW120
12" SUBWOOFER



[1000 WATTS RMS] MD: 142mm (5-19/32")
MDi: 228mm (9")

CP- SW100
10" SUBWOOFER



[800 WATTS RMS] MD: 120mm (4-23/32")
MDi: 228mm (9")

CS-SW100
10" SUBWOOFER



- Battery back-up siren
- Dual stage shock sensor
- On-board central locking relays

- 110 dB single tone siren
- Panic Mode

CE-SS200B
VEHICLE SECURITY SYSTEM



AC-AK04E
4 GAUGE AMP INSTALLATION KIT



AC-AK08E
8 GAUGE AMP INSTALLATION KIT

MD = mounting depth
MDi = mounting diameter (cut-out diameter)

SPECIFICATIONS

	PEAK POWER	RATED POWER	FREQ. RESPONSE	LPF	TUNING	WOOFER SIZE	FUSE	ACTIVE ENCLOSURES
CS-AT1100	360	120	36Hz - 250Hz	40Hz - 250Hz	Bass Reflex	10"	20A	
CS-AW1120	450	150	34Hz - 250Hz	40Hz - 250Hz	Bass Reflex	12"	25A	
CS-AW2120	750	250	34Hz - 250Hz	40Hz - 250Hz	Bass Reflex	Dual 12"	25A	
CP-AW1120	750	250	32Hz - 250Hz	40Hz - 250Hz	Bass Reflex	12"	25A	
CP-AW2120	900	300	32Hz - 250Hz	40Hz - 250Hz	Bass Reflex	Dual 12"	30A	
CP-AS1080	300	100	20Hz - 120Hz	40Hz - 120Hz	Sealed	8"	2 x 15A	

	PEAK POWER	RATED POWER	FREQ. RESPONSE	AMPLIFIERS
CA-AM10900	900 Watts	300W RMS x 1 @ 4Ω 1% THD+N / 480W RMS x 1 @ 2Ω 1% THD+N	15Hz - 185Hz	
CA-AM20350	350 Watts	55W RMS x 2 @ 4Ω 1% THD+N / 85W RMS x 2 @ 2Ω 1% THD+N / 175W RMS x 1 @ 4Ω Bridged 1% THD+N	10Hz - 100kHz	
CA-AM20650	650 Watts	115W RMS x 2 @ 4Ω 1% THD+N / 170W RMS x 2 @ 2Ω 1% THD+N / 340W RMS x 1 @ 4Ω Bridged 1% THD+N	10Hz - 100kHz	
CA-AM40700	700 Watts	50W RMS x 4 @ 4Ω 1% THD+N / 80W RMS x 4 @ 2Ω 1% THD+N / 160W RMS x 2 @ 4Ω Bridged 1% THD+N	10Hz - 100kHz	
CA-AM41200	1200 Watts	110W RMS x 4 @ 4Ω 1% THD+N / 150W RMS x 4 @ 2Ω 1% THD+N / 300W RMS x 2 @ 4Ω Bridged 1% THD+N	10Hz - 100kHz	
CA-DA12250	2250 Watts	500W RMS x 1 @ 4Ω 1% THD+N / 850W RMS x 1 @ 2Ω 1% THD+N / 1100W RMS x 1 @ 1Ω 1% THD+N	10Hz - 250Hz	
CA-DA41400	1400 Watts	150W RMS x 4 @ 4Ω 1% THD+N / 220W RMS x 4 @ 2Ω 1% THD+N / 440W RMS x 2 @ 4Ω Bridged 1% THD+N	10Hz - 100kHz	
CA-DA51600	1600 Watts	80W RMS x 4 + 250W RMS x 1 @ 4Ω 1% THD+N / 130W RMS x 4 + 330W RMS x 1 @ 2Ω 1% THD+N / 250W RMS x 2 @ 4Ω Bridged 1% THD+N + 250W RMS x 1 @ 4Ω 1% THD+N	10Hz - 100kHz	

	PEAK POWER	RATED POWER	FREQUENCY RESPONSE	IMPEDANCE	SENSITIVITY	MOUNTING DEPTH	MOUNTING DIAMETER*	CONE MATERIAL	TWEETER	SPEAKERS
CS-FR4020	160 Watts	30 Watts	44Hz - 24kHz	4 ohm	83 dB	45mm (1-3/4")	103mm (4-1/16")	Polypropylene	PEI	
CS-FR5020	190 Watts	35 Watts	41Hz - 24kHz	4 ohm	84 dB	43mm (1-11/16")	118mm (4-21/32")	Polypropylene	PEI	
CS-FR6020	210 Watts	40 Watts	35Hz - 24kHz	4 ohm	85 dB	41.5mm (1-11/16")	126mm (5")	Polypropylene	PEI	
CS-FR6930	310 Watts	55 Watts	28Hz - 25kHz	4 ohm	87 dB	71.5mm (2-14/16")	156mm (6-3/16") x 222mm (8-24/32")	Polypropylene	PEI	
CS-CM50	220 Watts	35 Watts	41Hz - 26kHz	4 ohm	85 dB	43mm (1-11/16")	118mm (4-21/32")	Polypropylene	PEI	
CS-CM60	240 Watts	40 Watts	35Hz - 26kHz	4 ohm	86 dB	45.5mm (1-13/16")	126mm (5")	Polypropylene	PEI	
CP-FR4020	180 Watts	35 Watts	42Hz - 25kHz	4 ohm	86 dB	52mm (2-1/32")	103mm (4-1/16")	IMPP	Silk Dome	
CP-FR5020	220 Watts	40 Watts	35Hz - 25kHz	4 ohm	88 dB	57mm (2-1/4")	121mm (4-13/16")	IMPP	Silk Dome	
CP-FR6030	250 Watts	45 Watts	29Hz - 25kHz	4 ohm	89 dB	65mm (2-9/16")	131mm (5-5/32")	IMPP	Silk Dome	
CP-FR6930	450 Watts	75 Watts	25Hz - 30kHz	4 ohm	90 dB	84mm (3-5/16")	156mm (6-3/16") x 222mm (8-24/32")	IMPP	Silk Dome	
CP-CM50	250 Watts	45 Watts	35Hz - 35kHz	4 ohm	88 dB	57mm (2-1/4")	121mm (4-13/16")	IMPP	Silk Dome	
CP-CM60	280 Watts	50 Watts	29Hz - 35kHz	4 ohm	89 dB	67mm (2-5/8")	131mm (5-5/32")	IMPP	Silk Dome	
PP-FR6520	240 Watts	110 Watts	55Hz - 22kHz	4 ohm	91 dB	65mm (2-9/16")	140mm (5-8/16")	CURV	Titanium	
PP-CM650	280 Watts	120 Watts	40Hz - 22kHz	4 ohm	91 dB	65mm (2-9/16")	140mm (5-8/16")	CURV	Titanium	
PP-FR6920	280 Watts	110 Watts	45Hz - 22kHz	4 ohm	92 dB	84mm (3-5/16")	158mm (6-7/32") x 227mm (8-15/16")	CURV	Titanium	

	PEAK POWER	RATED POWER	FREQUENCY RESPONSE	IMPEDANCE	SENSITIVITY	MOUNTING DEPTH	MOUNTING DIAMETER*	CONE MATERIAL	SUBWOOFERS
CS-SW100	800 Watts	200 Watts	33Hz - 1.2kHz	4 ohm	87 dB	120mm (4-23/32")	228mm (9")	Pressed Paper	
CS-SW120	1,000 Watts	250 Watts	27Hz - 1kHz	4 ohm	88 dB	136mm (5-11/32")	277mm (10-15/16")	Pressed Paper	
CP-SW100	1,000 Watts	250 Watts	30Hz - 1.2kHz	4 ohm	88 dB	142mm (5-19/32")	228mm (9")	Pressed Paper	
CP-SW120	1,300 Watts	325 Watts	24Hz - 1kHz	4 ohm	89 dB	154mm (6-1/16")	277mm (10-15/16")	Pressed Paper	
PP-SW120	1,200 Watts	500 Watts	25Hz - 2kHz	2 x 2 ohm	90 dB	167mm (6-9/16")	295mm (11-10/16")	Fibre Composite	

AC-AK04E 4 GAUGE AMP INSTALLATION KIT – Includes:	AC-AK08E 8 GAUGE AMP INSTALLATION KIT – Includes:	AMP KITS
1x 5m 4 gauge power cable	1x 5m 8 gauge power cable	8x cable ties
1x 1m 4 gauge ground cable	1x 1m 8 gauge ground cable	2x 8 gauge nickel plated ring terminals
1x 5m 18 gauge remote cable	1x 5m 18 gauge remote cable	2x 8 gauge nickel plated fork terminals
2x 5m 18 gauge speaker cables	2x 5m 18 gauge speaker cables	1x 18 gauge nickel plated fork terminal
1x 5m standard RCA interconnect	1x 5m standard RCA interconnect	2x 4.8mm nickel plated female speaker terminals
1x AUE fuse holder	1x AUE fuse holder	2x 2.5mm nickel plated female speaker terminals
1x 60 amp AUE fuse	1x 60 amp AUE fuse	2x cable rubber grommets
1x 1.8m of protective sleeving	1x 1.8m of protective sleeving	



FUSION[®]

www.fusionelectronics.com

FUSION Electronics New Zealand
FUSION Electronics Australia
FUSION Electronics Europe
FUSION Electronics USA

nz@fusionelectronics.com
australia@fusionelectronics.com
europe@fusionelectronics.com
nasa@fusionelectronics.com